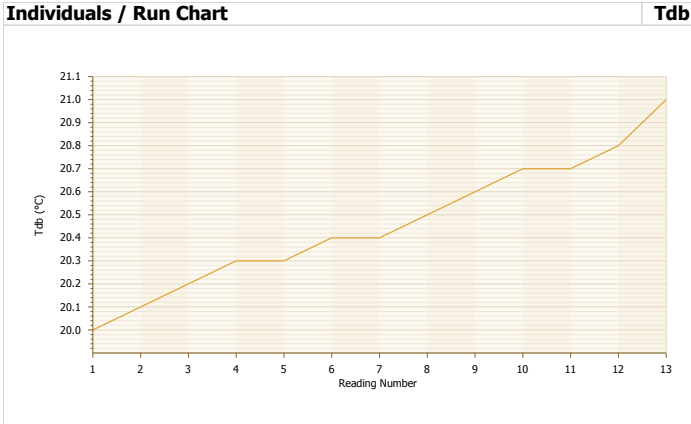


# Inspection Report - Climate

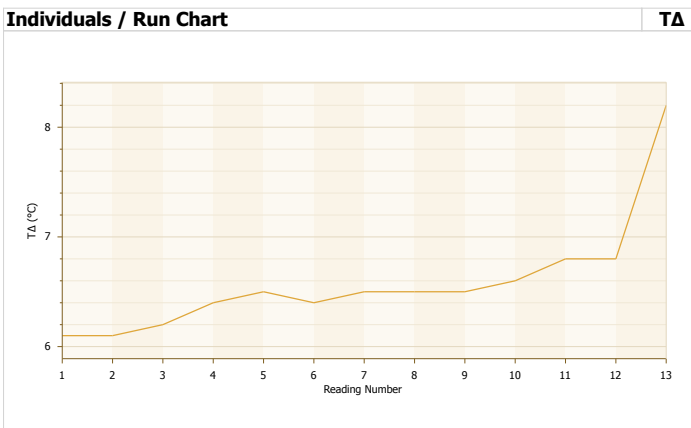
BAMR Example\Pipeline #234\  
Climate Conditions



<b>Project</b>	
Name	BAMR Example

<b>Gauge</b>	
Type	Elcometer 319/3
PCB Serial #	
Serial #	
User ID	

<b>Batch</b>	
Name in Gauge	
User ID	Climate Conditions
Created Date	23-Nov-10 10:28:56 AM
Updated Date	23-Nov-10 10:28:56 AM
First Reading Date	23-Nov-10 10:31:35 AM
Last Reading Date	23-Nov-10 12:19:51 PM



Statistics	RH	Ts	Ta	Td	TA	Tdb	Twb	SH
# Readings	13	13	13	13	13	13	13	13
Mean	65.90 %	20.45 °C	20.46 °C	13.86 °C	6.59 °C	20.46 °C	16.46 °C	9.779 g/kg
Maximum	68.3 %	21.0 °C	21.0 °C	14.1 °C	8.2 °C	21.0 °C	16.6 °C	9.92 g/kg
Minimum	59.4 %	20.1 °C	20.0 °C	12.8 °C	6.1 °C	20.0 °C	16.1 °C	9.12 g/kg
Standard Deviation (σ)	2.20 %	0.28 °C	0.29 °C	0.33 °C	0.54 °C	0.29 °C	0.14 °C	0.207 g/kg
Mean + 3σ	72.49 %	21.29 °C	21.33 °C	14.86 °C	8.22 °C	21.33 °C	16.89 °C	10.400 g/kg
Mean - 3σ	59.31 %	19.61 °C	19.60 °C	12.87 °C	4.96 °C	19.60 °C	16.02 °C	9.158 g/kg
Coefficient of Variation	3.3%	1.4%	1.4%	2.4%	8.2%	1.4%	0.9%	2.1%

Limits	RH	Ts	Ta	Td	TA	Tdb	Twb	SH
High Limit	75.0 %							
# Readings Above	0 (0.0%)							
Low Limit	30.0 %				3.0 °C			
# Readings Below	0 (0.0%)				0 (0.0%)			

Image.jpg



# Inspection Report - Climate

BAMR Example\Pipeline #234\  
Climate Conditions



Date & Time	#	RH (%)	Ts (°C)	Ta (°C)	Td (°C)	TΔ (°C)	Tdb (°C)	Twb (°C)	SH (g/kg)
23-Nov-10 10:31:35 A	1	68.3	20.1	20.0	14.0	6.1	20.0	16.3	9.85
23-Nov-10 10:32:05 A	2	68.0	20.1	20.1	14.0	6.1	20.1	16.4	9.86
23-Nov-10 10:32:35 A	3	67.3	20.2	20.2	13.9	6.2	20.2	16.4	9.82
23-Nov-10 10:33:05 A	4	66.6	20.2	20.3	13.9	6.4	20.3	16.4	9.77
23-Nov-10 10:33:35 A	5	66.1	20.3	20.3	13.8	6.5	20.3	16.4	9.72
23-Nov-10 10:34:05 A	6	66.5	20.4	20.4	14.0	6.4	20.4	16.5	9.84
23-Nov-10 10:34:35 A	7	66.6	20.5	20.4	14.0	6.5	20.4	16.5	9.87
23-Nov-10 10:35:05 A	8	66.3	20.5	20.5	14.0	6.5	20.5	16.5	9.87
23-Nov-10 10:35:35 A	9	66.2	20.6	20.6	14.1	6.5	20.6	16.6	9.92
23-Nov-10 10:36:05 A	10	65.9	20.6	20.7	14.1	6.6	20.7	16.6	9.91
23-Nov-10 10:36:35 A	11	64.8	20.7	20.7	13.9	6.8	20.7	16.6	9.78
23-Nov-10 10:37:05 A	12	64.8	20.7	20.8	13.9	6.8	20.8	16.6	9.80
23-Nov-10 12:19:51 P	13	59.4	21.0	21.0	12.8	8.2	21.0	16.1	9.12