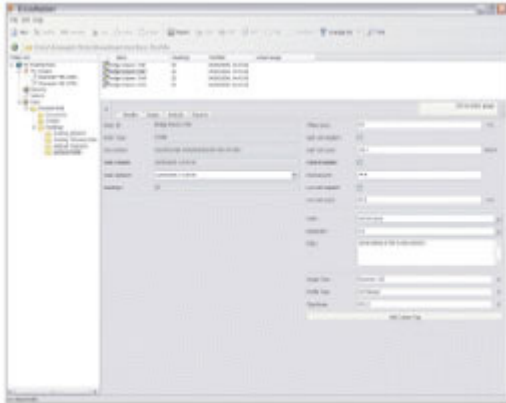


# elcometer® ElcoMaster™ Data Management Software

Whether you want to use the data for analysis or to create professional reports for distribution to customers or colleagues, **ElcoMaster™** can help. With built in report templates and easy access of all data, images and other associated files, **ElcoMaster™** makes managing your data simple.



The software has been designed to be familiar and intuitive to any PC user. When the gauge is connected to the PC, individual readings can be sent directly into the software for real time analysis or simply 'drag and drop' a batch from the gauge to the software.

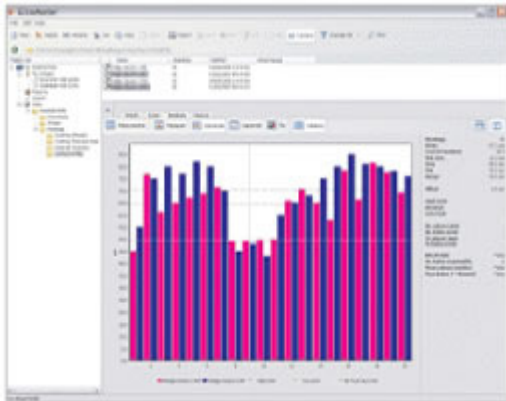
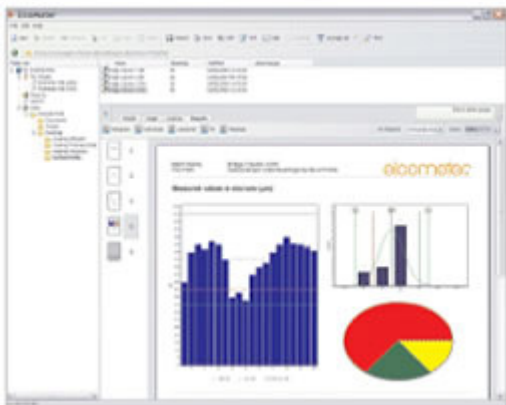
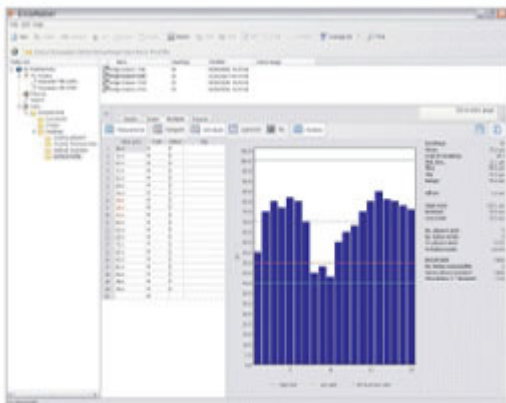
You can store all of your associated job or inspection files, health and safety reports etc. within **ElcoMaster™** - providing you with one programme that holds all of your inspection information in one place.

Viewing data and producing standard reports is achievable in just a few clicks. Fully customised reports can be produced quickly by using the **ElcoMaster™** report designer.

In addition to the readings and charts, you can also assign a digital photograph to an individual batch of data, allowing you to visually display the inspection area in your reports. Batches can be combined for immediate comparison of data from various areas of the job site.

#### **ElcoMaster™** features include:

- Create professional reports in seconds.
- Export reports to spreadsheets, text files or save as PDF or JPEG files.
- Copy and paste reports into other documents.
- Reports can be combined in order to clearly compare different batches.
- E-mail reports directly from **ElcoMaster™**.
- Assign batch identification tags.
- Batches can be renamed to clearly identify the inspection batch.
- Wide range of standard reports include;
  - Individual measurements
  - Statistics
  - Histograms
  - Individual line or bar charts
  - Log normal
  - Pie charts
- Fully customise reports using the **ElcoMaster** report designer tool.
- Include company graphics and logos on every report.
- Combine batches to compare readings or link batches together from different gauges into one comprehensive inspection file.
- Find feature to quickly locate a specific file or batch.



Elcometer **ElcoMaster™**, which is a direct replacement for EDCS+, is **FREE** and is compatible with the following Elcometer instruments :

- Elcometer 456<sup>3</sup> Digital Coating Thickness Gauges
- Elcometer 355 Standard and Top Coating Thickness Gauges
- Elcometer 224 Model T Digital Surface Profile Gauge
- Elcometer 206DL Ultrasonic Thickness Gauge
- Elcometer 207DL Precision Ultrasonic Thickness Gauge
- Elcometer 208DL Ultrasonic Thickness Gauge

Also available for download via the website is **ElcoMaster™ Mobile** software for use on mobile phones and PDA's and **ElcoMaster™ Conversion** software which allows data from EDCS+ to be converted for use in **ElcoMaster™**.