

elcometer® **ElcoMaster Data Management Software**

ElcoMaster™ is a fast, easy to use software and mobile app for all your data management, reporting and quality assurance needs. It's not just taking measurements but what you do with the collected data that matters.

Professional inspection reports provide a competitive advantage in today's industrial environment. ElcoMaster™ is the ultimate digital job file software solution.



This easy to use software allows you to store all your inspection readings (including dry film thickness, adhesion, cleanliness, climate, surface profile and much more). With its in-built report templates and easy access of all data, images and other associated files, ElcoMaster™ makes both managing your data and producing professional reports simple.

Professional inspection reports provide a competitive advantage in today's industrial environment. ElcoMaster™ is a fast, easy to use software solution for all your reporting requirements.

Available free of charge ElcoMaster™ has been designed to be familiar and intuitive to any computer user. When the gauge is connected to the PC, individual readings can be sent directly into the software for real time analysis or simply 'drag and drop' a batch from the gauge to the software. Whether you want to use the data for analysis or to create professional reports for distribution to customers or colleagues, ElcoMaster™ can help.

All associated job or inspection files, health and safety reports etc. can also be stored within ElcoMaster™.

Whilst viewing data and producing reports is achievable in just a few clicks, customised reports can also be generated quickly using the integrated ElcoMaster™ Report Designer.

Features

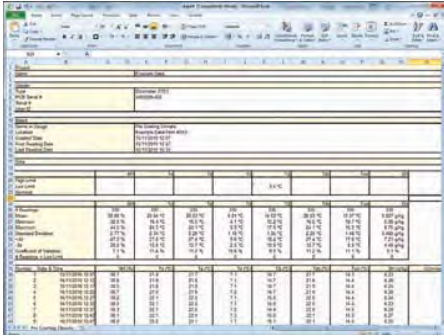
ElcoMaster™ features include:

- Export reports to spread sheets, text files or save as PDF or JPEG files
- Copy and paste reports into other documents
- E-mail reports directly from ElcoMaster™
- Supports Elcometer gauges with Bluetooth wireless technology, USB and RS232 data outputs
- Assign batch identification tags and rename batches to clearly identify the inspected work
- Wide range of standard reports including: Individual measurements, Statistics, Histograms, Individual line or bar charts, Log normal, and Pie charts
- Fully customise reports using the integrated ElcoMaster™ Report Designer
- Include company graphics and logos on every report
- Combine batches to compare readings or link batches together from different gauges into one comprehensive inspection file
- "Find" feature to quickly locate a specific file or batch
- Free ElcoMaster™ software upgrades with automatic update notification
- Automatically notifies and allows free updates the new Elcometer 456 Coating Thickness Gauge with new features and functions (as they are released)

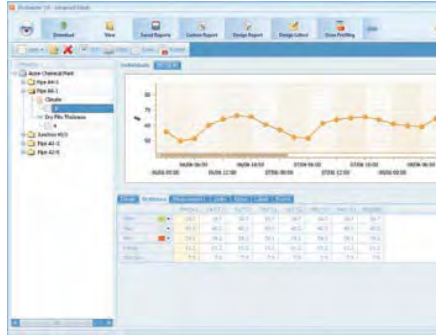


What ElcoMaster™ can do:

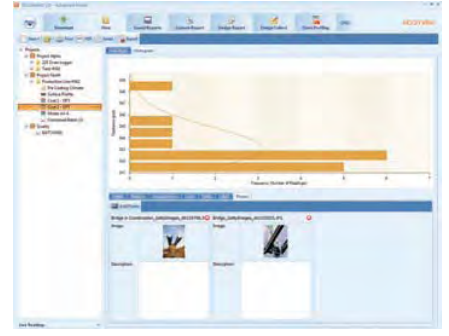
- Import and combine measurements via Bluetooth® or USB from a full range of Elcometer gauges, including;
 - Surface Profile
 - Salt Contamination
 - Climatic Conditions
 - Oven Data Logging
 - Coating Thickness
 - Corrosion Thickness
 - Adhesion Testing
 - Gloss Measurements
- No need to learn different software for different gauges, all Elcometer products use the same expert platform
- Store data in a simple file tree, by project and by inspection type
- Easy on screen analysis with histograms, statistics, measurements, limits, notes, diagrams and photographs
- Export data direct to Microsoft Excel. csv. txt. Cqatk formats etc to save time and prevent keying in errors.



ElcoMaster™ exports data direct to Microsoft Excel. csv, txt, cqatk formats etc. to save time and prevent keying in errors.



Data can be stored in a simple file tree, by project and by inspection type.



Add photographs and notes to your reports.

Easy to connect

Using ElcoMaster's™ gauge wizard, connecting a gauge & downloading data (via Bluetooth® or USB) is fast and easy

Import existing reports

Scan your existing report into ElcoMaster™ and drag & drop all your data where you want it, then simply save and print

Export, print or send

Export, print, .pdf or email directly from ElcoMaster™ at the click of a button

Cloud

Multi-site access through secure cloud computing

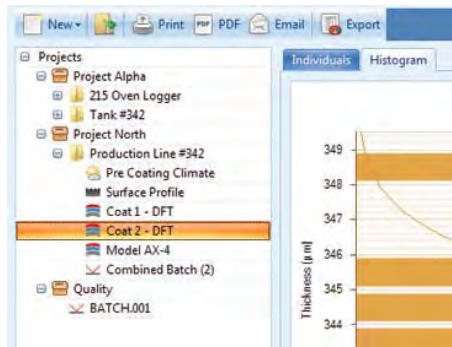
Inspectors can spend up to 30% of their work week producing reports.

ElcoMaster™ saves time and money by producing professional bespoke reports in seconds - even when out on site.

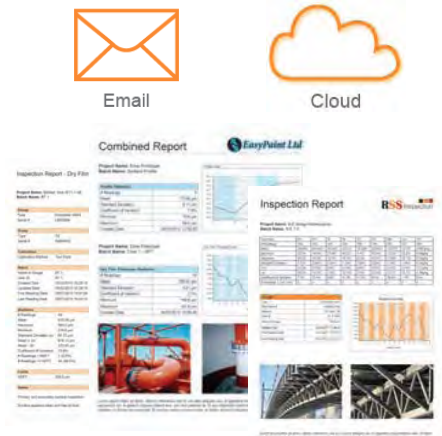
- Generate reports instantly using standard or pre-designed templates in seconds. No need for data manipulation simply connect the gauge, download data and drag & drop.
- Combine multiple inspection parameters (such as material thickness, profile, climate, DFT, adhesion and gloss) together with images, notes and other project specific information in bespoke quality reports to set you apart from the competition.
- In many industries multiple sites/locations/ production lines are used to fabricate the product components which are brought together at the final assembly line. Different inspection parameters all need to be combined to approve the final product. Using Cloud technology ElcoMaster™ gives you real time quality control monitoring inspection projects in any location.



Using the Report Designer within ElcoMaster™, measurements can be quickly displayed on an image or drawing.



Combine multiple inspection parameters (Material thickness, profile, climate, DFT, adhesion & gloss) into bespoke reports.



ElcoMaster Mobile App brings the office to where you are

You can connect Elcometer Bluetooth[®] enabled inspection gauges directly to iPhone, iPad and iPods or Android™ mobile phones and tablets via ElcoMaster™ Mobile App.

With data transferred to mobile communication devices the Elcometer gauge does not have to be returned to the office for data download. Inspection work can continue without interruption.



Connect

Connect gauge via Bluetooth[®] to phone to see live readings directly on the phone and save them into batches.

Review

Review average, maximum and minimum readings instantly.



Analyse

Analyse data via sequential readings, statistics, charts & histograms or on images.

Manage & Print

Store all data; dry film thickness, surface profile, climate and manual reports in easy to manage folders.

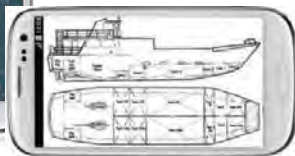


Photos & Notes

Add photos, notes and comments.

GPS

Store GPS locations in batches and view location on Google Maps (Available on Android™ only).



Send

Email inspection data from a mobile device to a PC for further analysis and reporting or transfer data via the Cloud.



The different ways ElcoMaster™ can help you do your job better

ElcoMaster™ has been designed to be a very intuitive method of developing professional reports, it is however extremely versatile. Here are just a few ways ElcoMaster™ can be used in day-to-day activities of a coating professional.

1. Gauge to PC to Excel

Transferring inspection data straight into Microsoft Excel via Bluetooth® or USB is simple and easy.



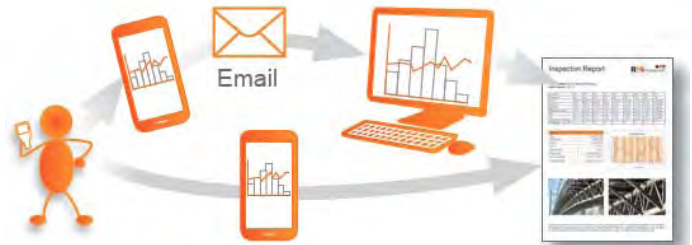
2. Gauge to PC data transfer into ElcoMaster™

Using Bluetooth® or USB, ElcoMaster™ transfers inspection data in seconds, archiving data and generating reports at the click of a button.



3. ElcoMaster™ Mobile App for immediate data transfer from the site to the office

Transfer inspection data straight to mobiles and tablets via Bluetooth® when on site for instant analysis, generate .pdf reports (Available on iOS devices only) and email them back to the office for storing, review and QA reporting.



4. Upload to a cloud for real time analysis anywhere

Using ElcoMaster™ Mobile App you can upload inspection data, photos, notes and GPS coordinates direct to a Cloud (Available on Android™ only) account of your choice via 3G/4G or WiFi.

All data is instantly visible to other approved users of the account - through a secure log-in on any computer or mobile device anywhere in the world.

Using Bluetooth® or USB, ElcoMaster™ transfers inspection data in seconds, archiving data and generating reports at the click of a button.



5. Seamlessly link multiple sites or production lines

ElcoMaster™ gives you real time quality control monitoring from multiple inspection projects in any location.

You can compare and combine inspection data from different production lines or different locations, to produce specific Project Inspection Reports quickly and easily.



Future proof your gauge and software

When ElcoMaster 2.0 is installed on a PC the software will inform you of any available software upgrades – when connected to the internet.

When you connect your new Elcometer 456 gauge to ElcoMaster 2.0 it will also inform you of any gauge enhancements - allowing you to directly upgrade your gauge

Once you have recorded all your measurements using any Elcometer gauge, ElcoMaster 2.0 gives you the power to review your data on your PC in seconds.

ElcoMaster 2.0's internal wizards guide you through each step, from connecting a gauge to archiving - allowing you to produce professional reports quickly and easily.

Elcometer **ElcoMaster™** is **FREE** and is compatible with the following Elcometer instruments :

- Elcometer 456 Digital Coating Thickness Gauges
- Elcometer 355 Standard and Top Coating Thickness Gauges
- Elcometer 319 Model T Dew Point Meter
- Elcometer 224 Model T Digital Surface Profile Gauge
- Elcometer 510 Automatic Adhesion Gauge
- Elcometer 480 Single, Dual & Triple Angle Glossmeters
- Elcometer MTG4DL Ultrasonic Material Thickness Gauge
- Elcometer MTG6DL Ultrasonic Material Thickness Gauge
- Elcometer MTG8DL Ultrasonic Material Thickness Gauge

Also available for download via the website is **ElcoMaster™ Mobile** software for use on mobile phones and PDA's.

