



Leica DD175 Depth and GPS Package

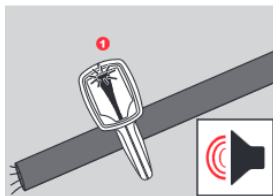


The Leica DD175 Depth and GPS package features advanced automatic controls making it easy-to-use, requiring minimal user experience. The DD175 Depth and GPS package simplifies detecting the position of buried cables and pipes before excavation work, helping prevent operator injury, asset damage and any subsequent costs.

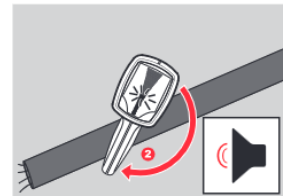
Use the Leica DD175 Buried Utility Locator in conjunction with the DA175 transmitter and range of accessories to achieve improved accuracy and application scope. Take advantage of the Bluetooth and GPS connection for sharing data with the existing DX Software Suite. Work safer, simpler, and smarter with automatic pinpointing. Reduce the likelihood of human error and enable easier and more efficient cable and pipe location, saving you time and money.

Using the Leica DD175 (50Hz) Depth & GPS package

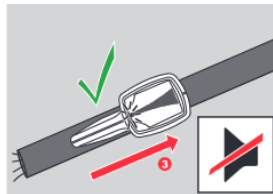
1. Pinpoint a utility by finding the peak reading. The peak reading is found when the locator is positioned directly over a utility and at 90° to it.



2. Rotate the Locator around its axis until the signal strength indicators are at a minimum.

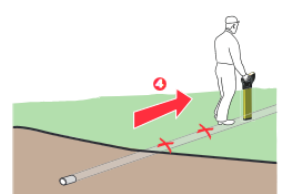


3. When the signal strength indicators are at a minimum, the blade of the locator is in line with the utility and indicates its direction.



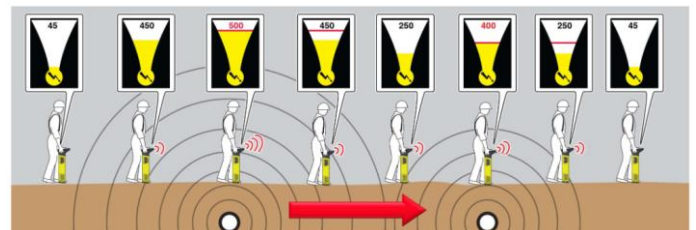
4. Trace the route of the utility by repeating the following process:

- Pinpoint the utility.
- Determine the direction of the utility.
- Follow the direction of the utility.



Simpler to Use

- Auto mode sweeps in both Power and Radio modes
- Digital Signal Processing (DSP) filters signals to ensure best detection capabilities
- Automatic controls replaces manual sensitivity
- Pinpointing with numerical and graphical display readings



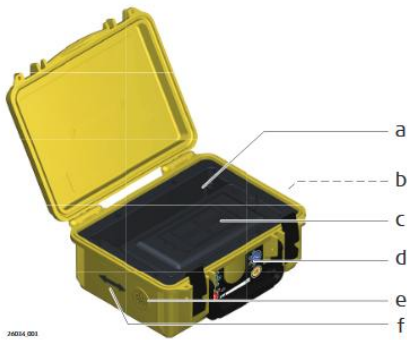
Components:

Cable Locator

- a) **Display panel**
Contains the operational controls.
- b) **Speakers**
(mounted internally left and right) Active at power on and when a signal is detected
- c) **On/Off trigger**
Press and hold the trigger to activate the Locator.
Release the trigger to deactivate.
- d) **Battery hatch release**
Pressing the release button unlocks the battery hatch allowing access to the battery compartment.
- e) **Battery compartment**
6 x LR6 (AA) alkaline batteries are used. Replace all batteries when indicated.
- f) **Case foot**
The case foot can be replaced if it is worn. Contact your agency or Leica Geosystems authorised service workshop.



Signal Transmitter



- a) Accessory compartment
- b) Connection socket
- c) 4 x LR20 alkaline batteries compartment
- d) Signal transmitter keyboard
- e) Speaker
- f) Induction arrow

Technical Specifications

Buried Utility Locator	DD175
Power	50Hz / 60Hz Model
Radio	15kHz - 60kHz
Auto	Power, Radio, 33kHz
Transmitter Mode	32.768 (33) kHz
	8.192 (8) kHz
	512 Hz
	640 Hz
Depth Range	Line 0.3m to 3m
	Sonde 0.3m to 9.99m
Depth Accuracy	10%
Environmental Standard	IP54
Operating Temperature	-20° C to 50° C
Battery	6 x LR6 (AA) Alkaline
Battery Operated Time**	15 hours
Dimensions (HxWxD)	760 x 250 x 85 mm
Weight with Batteries	2.7 kg
Internal Data Storage	■

Data Logging	■
GPS	■
Bluetooth	■

* Depth to an undistorted signal


** Constant use at 20°C

Signal Transmitter	DA175
Induction Mode Frequencies	32.768 (33) kHz / 8.192 (8) kHz
Power Output	Up to 1 Watt max. when connected to a buried service with an impedance of 300 Ω
Direct Connection Mode Frequencies	32.768 (33) kHz / 8.192 (8) kHz / 512 kHz / 640 Hz
Environmental Standard	Cover Closed: IP67 Cover Open: IP65
Operating Temperature	-20° C to 50° C
Storage Temperature	-40° C to 70° C
Battery	4 x D alkaline (IEC LR20), supplied
Battery Operating Time	30 hrs intermittent use at 20 °C
Dimensions (HxWxD)	250 x 206 x 113 mm
Weight with Batteries	2.5 kg



Packing List

Leica DD175 Utility Locator
Leica DA175 1 Watt Signal Transmitter
1 System Carry Bag
1 Year Warranty
User Manuals
Alkaline Batteries

Part Numbers

Leica DD175 (50Hz) Depth & GPS package	Part Number: 6017281
	

Accessories

Trace Rod 50	Part Number: 850278
	
Trace Rod 80	Part Number: 850279
	

Transmitter Clamp 100mm



Part Number: 850280

Transmitter Clamp 80mm



Part Number: 850281

Mini Sonde 33



Part Number: 850288

Midi Sonde 33/8



Part Number: 850289

Maxi Sonde 33/8



Part Number: 850290

Clamp Sonde 33



Part Number: 850291

Duct Sonde



Part Number: 856131