



# elcometer® 3120 Shore Durometer

Can be used in accordance with:  
**ASTM D 2240, DIN 53505,  
 ISO 868, NF T 51109**

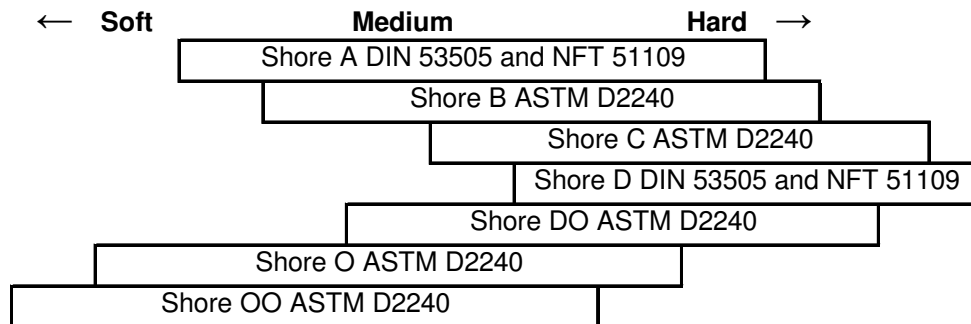
Instruments widely used to test soft materials: rubber, various resins, wood, leather, formica etc.

A point or a ball penetrates the material under spring pressure, with variable force depending on the model. A direct reading is displayed on the dial which is graduated from 0 to 100 Shore Hardness Units.

All the instruments can be used hand held or on a stand (optional). The stand is designed to carry the load of 12.5 N of Shore A, or an additional load to obtain the 50 N used in the Shore D.

### Options:

- Maximum reading needle.
- Stand with contact lever, useful for repetitive tests or tests on small samples



## Part Numbers

Model	Description	Part Number	
		Without calibration certificate	With calibration certificate
Elcometer 3120/1	Elcometer 3120 Shore Durometer A	K0003120M001	K0003120M015
Elcometer 3120/3	Elcometer 3120 Shore Durometer B	K0003120M003	K0003120M016
Elcometer 3120/4	Elcometer 3120 Shore Durometer C	K0003120M004	K0003120M017
Elcometer 3120/5	Elcometer 3120 Shore Durometer D	K0003120M005	K0003120M018
Elcometer 3120/6	Elcometer 3120 Shore Durometer O	K0003120M006	K0003120M019
Elcometer 3120/7	Elcometer 3120 Shore Durometer OO	K0003120M007	K0003120M020
Elcometer 3120/10	Elcometer 3120 Shore Durometer DO	K0003120M010	-
Elcometer 3120/24	Elcometer 3120 Shore Durometer OOO and 400g	K0003120M024	-
Elcometer 3120/8	Elcometer 3120 Shore Durometer A with Max indicator	K0003120M008	-
Elcometer 3120/25	Elcometer 3120 Shore Durometer A and 12.5N Weight with Max indicator	-	K0003120M025
Elcometer 3120/9	Elcometer 3120 Shore Durometer D with Max indicator	K0003120M009	-
Elcometer 3120/204	Elcometer 3120 Shore Durometer B with max indicator	K0003120M204	-
Elcometer 3120/205	Elcometer 3120 Shore Durometer C with max indicator	K0003120M205	-
Elcometer 3120/207	Elcometer 3120 Shore Durometer O with max indicator	K0003120M207	-
Elcometer 3120/208	Elcometer 3120 Shore Durometer DO with max indicator	K0003120M208	-
Elcometer 3120/221	Elcometer 3120 Shore Durometer OO & 400g weight	K0003120M221	-
<b>Accessories</b>	Test stand BS61 & 400g load Shore OO & OOO	KT003120N203	
	Test stand BS61 & 12.5N load Shore A	KT003120N002	
	50N load Shore D for stand BS61	KT003120P005	